

# RACK 19" cabinets and accessories





## RACK 19" cabinets

<b>Page 2</b>	<b>Wall mounted, ready-to-assemble</b> RWA...-G series 540×400 / 600×450 / 600×600
<b>Page 2</b>	<b>Wall mounted, fully assembled</b> RW...-G series 540×400 (assembled RWA...-G series 540×400)
<b>Page 3</b>	<b>Wall mounted, ready-to-assemble</b> RWA series 600×450 / 600×600
<b>Page 3</b>	<b>Wall mounted, fully assembled</b> RW series 600×450 / 600×600
<b>Page 4</b>	<b>Wall mounted, bisectional, ready-to-assemble</b> RWDA...-G series 600×550
<b>Page 4</b>	<b>Wall mounted, fully assembled, double section</b> RWD series 600×600
<b>Page 5</b>	<b>Wall mounted, spawane, wandaloodporne</b> RK...-G series 600×400
<b>Page 6</b>	<b>Floor standing, ready-to-assemble</b> RS series 600×600 / 600×800 / 600×1000 800×800 / 800×1000 - server
<b>Page 6</b>	<b>Floor standing, fully assembled</b> ZRS series 600×600 / 600×800 / 600×1000

## PoE switches

<b>Page 7</b>	<b>PoE switches for IP cameras</b> S, SF, SFG series
---------------	---

## Enclosures and drawers

<b>Page 7</b>	Enclosures with DIN rail
<b>Page 8</b>	Enclosure for alarm control panel – vertical
<b>Page 8</b>	Enclosures for alarm control panels – horizontal, sliding
<b>Page 9</b>	ARAD...N enclosures
<b>Page 9</b>	Drawers

## Accessories for RACK 19" cabinets

<b>Page 10</b>	Battery enclosures
<b>Page 10</b>	Fixed shelves
<b>Page 11</b>	Sliding shelves
<b>Page 11</b>	Mounting rails / Sliding mounting rails
<b>Page 12</b>	Patch panels / Patch panel frames
<b>Page 13</b>	Fans / Fan with thermostat Thermostats
<b>Page 14</b>	Lighting / Blanking panels Power distribution units
<b>Page 15</b>	Cable management panels / Brush grommets Tamper protection for RACK 19" cabinets
<b>Page 16</b>	Grounding wires / Plinths Casters, leveling feet / Locks, screws

## RACK 19" cabinets – wall mounted, ready-to-assemble RWA...-G series

540×400 / 600×450 / 600×600

RACK 19" cabinets enable integrating CCTV, AC, I&HAS, RTV, LAN, or other systems in small companies or households. They are intended for devices manufactured in enclosures of 19" standard. Due to RACK cabinets, devices are aesthetically mounted and protected against mechanical damage.

Code	Height	Dimensions W×H×D [+/- 2mm]
------	--------	----------------------------------

540×400

<b>RWA454-G</b>	4U	540×280×400
<b>RWA654-G</b>	6U	540×368×400
<b>RWA954-G</b>	9U	540×501×400

600×450

<b>RWA1264-G</b>	12U	600×635×450
<b>RWA1564-G</b>	15U	600×769×450
<b>RWA1864-G</b>	18U	600×901×450

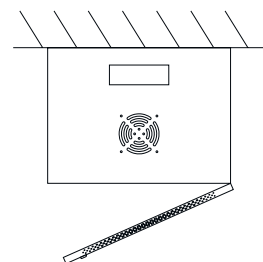
600×600

<b>RWA466-G</b>	4U	600×280×600
<b>RWA666-G</b>	6U	600×368×600
<b>RWA966-G</b>	9U	600×501×600
<b>RWA1266-G</b>	12U	600×635×600
<b>RWA1566-G</b>	15U	600×769×600
<b>RWA1866-G</b>	18U	600×901×600

### RACK 19"



Sample product  
**RWA654-G**



Help:

- Use CONFI-RACK®

**CONFI®  
RACK**

## RACK 19" cabinets – wall mounted, fully assembled RW...-G series

540×400 (assembled RWA...-G series 540×400)

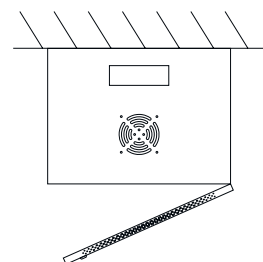
RACK 19" cabinets enable integrating CCTV, AC, I&HAS, RTV, LAN, or other systems in small companies or households. They are intended for devices manufactured in enclosures of 19" standard. Due to RACK cabinets, devices are aesthetically mounted and protected against mechanical damage.

Code	Height	Dimensions W×H×D [+/- 2mm]
<b>RW454-G</b>	4U	540×280×400
<b>RW654-G</b>	6U	540×368×400
<b>RW954-G</b>	9U	540×501×400

### RACK 19"



Sample product  
**RW654-G**



Help:

- Use CONFI-RACK®

**CONFI®  
RACK**



## RACK 19" cabinets – wall mounted, ready-to-assemble

### RWA series

600×450 / 600×600

RACK 19" cabinets enable integrating CCTV, AC, I&HAS, RTV, LAN, or other systems in small companies or households. They are intended for devices manufactured in enclosures of 19" standard. Due to RACK cabinets, devices are aesthetically mounted and protected against mechanical damage.

Code	Static load	Mounting dimensions W×H	External dimensions W×H×D [± 2mm]
------	-------------	----------------------------	--------------------------------------

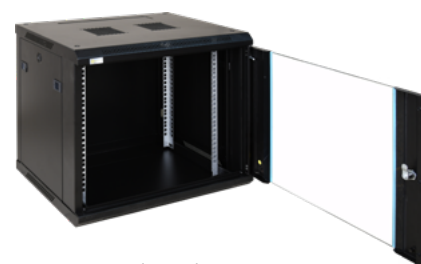
600×450

<b>RWA664</b>	70kg	19"×6U	600×372×450
<b>RWA964</b>	70kg	19"×9U	600×502×450
<b>RWA1264</b>	70kg	19"×12U	600×636×450

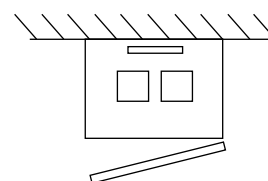
600×600

<b>RWA666</b>	70kg	19"×6U	600×372×600
<b>RWA966</b>	70kg	19"×9U	600×502×600
<b>RWA1266</b>	70kg	19"×12U	600×636×600

## RACK 19"



Sample product  
**RWA964**



Help:  
• Use CONFI-RACK®

**CONFI®  
RACK**

## RACK 19" cabinets – wall mounted, fully assembled

### RW series

600×450 / 600×600

RACK 19" cabinets enable integrating CCTV, AC, I&HAS, RTV, LAN, or other systems in small companies or households. They are intended for devices manufactured in enclosures of 19" standard. Due to RACK cabinets, devices are aesthetically mounted and protected against mechanical damage.

Code	Static load	Mounting dimensions W×H	External dimensions W×H×D [± 2mm]
------	-------------	----------------------------	--------------------------------------

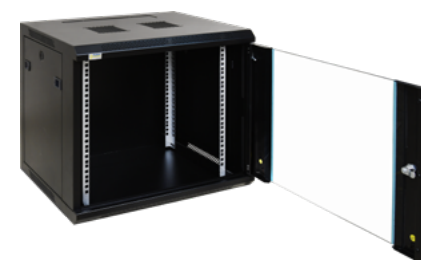
600×450

<b>RW664</b>	70kg	19"×6U	600×368×450
<b>RW964</b>	70kg	19"×9U	600×503×450
<b>RW1264</b>	70kg	19"×12U	600×636×450

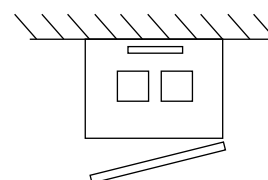
600×600

<b>RW666</b>	70kg	19"×6U	600×368×600
<b>RW966</b>	70kg	19"×9U	600×503×600
<b>RW1266</b>	70kg	19"×12U	600×636×600
<b>RW1566</b>	70kg	19"×15U	600×770×600

## RACK 19"



Sample product  
**RW964**



Help:  
• Use CONFI-RACK®

**CONFI®  
RACK**

## RACK 19" cabinets – wall mounted, two-section, ready-to-assemble

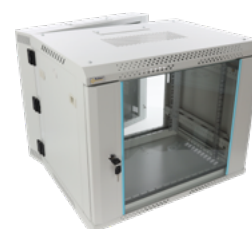
### RWDA...-G series

600×550

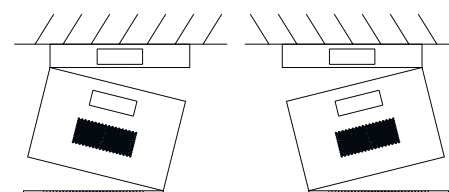
RACK 19" cabinets enable integrating CCTV, AC, I&HAS, RTV, LAN, or other systems in small companies or households. They are intended for devices manufactured in enclosures of 19" standard. Due to RACK cabinets, devices are aesthetically mounted and protected against mechanical damage.

Code	Height	Dimensions W×H×D [+/- 2mm]
<b>RWDA465-G</b>	4U	600×280×550
<b>RWDA665-G</b>	6U	600×368×550
<b>RWDA965-G</b>	9U	600×501×550
<b>RWDA1265-G</b>	12U	600×635×550
<b>RWDA1565-G</b>	15U	600×769×550
<b>RWDA1865-G</b>	18U	600×901×550

## RACK 19"



Sample product  
**RWDA965-G**



**Two-section design**  
(the possibility of repositioning the hinges)

Help:

- Use CONFI-RACK®

**CONFI®**  
**RACK**

## RACK 19" cabinets – wall mounted, double, fully assembled

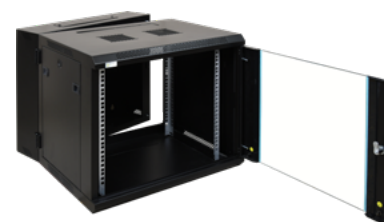
### RWD series

600×600

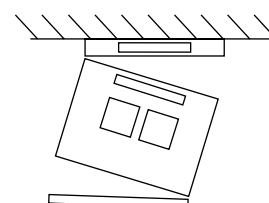
RACK 19" cabinets enable integrating CCTV, AC, I&HAS, RTV, LAN, or other systems in small companies or households. They are intended for devices manufactured in enclosures of 19" standard. Due to RACK cabinets, devices are aesthetically mounted and protected against mechanical damage.

Code	Static load	Mounting dimensions W×H	External dimensions W×H×D [+/- 2mm]
<b>RWD666</b>	70kg	19"×6U	600×368×600
<b>RWD966</b>	70kg	19"×9U	600×503×600
<b>RWD1266</b>	70kg	19"×12U	600×636×600

## RACK 19"



Sample product  
**RWD1266**



Two-section design

Help:

- Use CONFI-RACK®

**CONFI®**  
**RACK**

## RACK 19" cabinets – wall mounted, vandal-resistant (welded)

### RK...-G series

600×400

RACK 19" cabinets enable integrating CCTV, AC, I&HAS, RTV, LAN, or other systems in small companies or households. They are intended for devices manufactured in enclosures of 19" standard. Due to RACK cabinets, devices are aesthetically mounted and protected against mechanical damage.

Code	Height	Dimensions
		W×H×D [± 2mm] additional protective inclined top panel with height of 48 mm
RK464-G	4U	600×277×400
RK664-G	6U	600×367×400
RK964-G	9U	600×500×400
RK1264-G	12U	600×633×400
RK1564-G	15U	600×767×400

**RACK 19"**



Sample product  
**RK964-G**

Help:

- Use CONFI-RACK®

**CONFI®**  
**RACK**

## RACK 19" cabinets – floor standing, ready-to-assemble RS series

600×600 / 600×800 / 600×1000 / 800×800 / 800×1000

RACK 19" cabinets enable integrating CCTV, AC, I&HAS, RTV, LAN, or other systems in medium and big companies. They are intended for devices manufactured in enclosures of 19" standard. Due to RACK cabinets, devices are aesthetically mounted and protected against mechanical damage.

Code	Static load	Mounting dimensions W×H	External dimensions W×H×D [± 2mm]
600×600			
<b>RS1566</b>	1000kg	19"×15U	600×855×600
<b>RS2266</b>	1000kg	19"×22U	600×1155×600
<b>RS4266</b>	1000kg	19"×42U	600×2055×600

600×800

<b>RS2768</b>	1000kg	19"×27U	600×1380×800
<b>RS4268</b>	1000kg	19"×42U	600×2055×800

600×1000

<b>RS2761</b>	1000kg	19"×27U	600×1380×1000
<b>RS4261</b>	1000kg	19"×42U	600×2055×1000

800×800 – server

<b>RS4288</b>	1000kg	19"×42U	800×2055×800
---------------	--------	---------	--------------

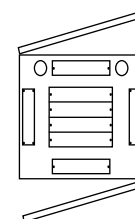
800×1000 – server

<b>RS4281</b>	1000kg	19"×42U	800×2055×1000
---------------	--------	---------	---------------

## RACK 19"



Sample product  
**RS2768**



Help:

- Use CONFI-RACK®

**CONFI®  
RACK**

## RACK 19" cabinets – floor standing, fully assembled ZRS series

600×600 / 600×800 / 600×1000

RACK 19" cabinets enable integrating CCTV, AC, I&HAS, RTV, LAN, or other systems in medium and big companies. They are intended for devices manufactured in enclosures of 19" standard. Due to RACK cabinets, devices are aesthetically mounted and protected against mechanical damage.

Code	Static load	Mounting dimensions W×H	External dimensions W×H×D [± 2mm]
600×600			
<b>ZRS1566</b>	1000kg	19"×15U	600×855×600
<b>ZRS2266</b>	1000kg	19"×22U	600×1166×600
<b>ZRS4266</b>	1000kg	19"×42U	600×2055×600

600×800

<b>ZRS2768</b>	1000kg	19"×27U	600×1380×800
<b>ZRS4268</b>	1000kg	19"×42U	600×2055×800

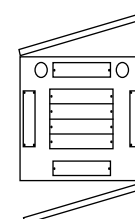
600×1000

<b>ZRS2761</b>	1000kg	19"×27U	600×1380×1000
<b>ZRS4261</b>	1000kg	19"×42U	600×2055×1000

## RACK 19"



Sample product  
**ZRS2768**



Help:

- Use CONFI-RACK®

**CONFI®  
RACK**

## PoE switches for IP cameras with desktop type power supply, with SFP sockets S, SF, SFG series

- supports devices compliant with IEEE 802.3af/at standard;
- 10/100 Mb/s and 1 Gb/s ports \*;
- PoE ports – data transfer and power supply \*;
- Long Range mode: STANDARD – 100m/100 Mb/s or EXTEND – 250m/10 Mb/s \*;
- 30W for each PoE port – 52 V DC (PoE+);
- UPLINK ports: 2 ports – for recorder / switch / computer installation;
- SFP UPLINK sockets: 2 ports – for recorder / switch / computer installation \*;
- UPLINK – COMBO type – operates RJ45 or SFP \*;
- desktop type power supply supplied with switch \*;
- standard RACK 19" / 1U;
- additional mounting elements: mounting brackets for RACK 19";
- warranty: 2 years.

\* depending on model



Sample product  
**SF116**

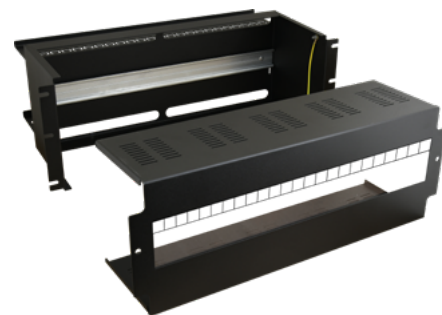
Code	Number of ports: PoE	Long Range mode 100 Mb/s - up to 100m 10 Mb/s - up to 250m	UPLINK		COMBO	Power supply	Mounting dimensions W×H×D (mounting brackets for RACK 19")	Dimensions W / W <sub>1</sub> / H / D [+/- 2mm]
			ports RJ45	sockets SFP				
<b>S116</b>	16 - 100 Mb/s	✓ (ports: 9 - 16)	2 - 1 Gb/s	—	—	230 V AC	19"×1U×181	486 / 270 / 44 / 181
<b>S124</b>	24 - 100 Mb/s	✓ (ports: 17 - 24)		—	—	230 V AC	19"×1U×204	486 / 330 / 44 / 204
<b>SF108-90W</b>	8 - 100 Mb/s	—		2 - 1 Gb/s	—	52 V DC / 90W desktop	19"×1U×150	482 / 220 / 44 / 150
<b>SF108</b>		—			—	52 V DC / 120W desktop	19"×1U×150	
<b>SF116</b>	16 - 100 Mb/s	—			✓	230 V AC	19"×1U×224	482 / 442 / 44 / 224
<b>SF124</b>	24 - 100 Mb/s	—			✓	230 V AC	19"×1U×224	486 / 442 / 44 / 224
<b>SFG108-90W</b>	8 - 1 Gb/s	—			—	52 V DC / 90W desktop	19"×1U×150	482 / 220 / 44 / 150
<b>SFG108</b>		—			—	52 V DC / 120W desktop	19"×1U×150	
<b>SFG116</b>	16 - 1 Gb/s	—			—	230 V AC	19"×1U×224	482 / 442 / 44 / 224
<b>SFG124</b>	24 - 1 Gb/s	—			—	230 V AC	19"×1U×224	486 / 442 / 44 / 224

## Enclosures with DIN rail

**ARADIN1** - Voltage distribution panel is intended for mounting fuses, type: S in RACK 19" cabinet. One enclosure can accommodate max. 24 fuses, 1S wide.

**ARADIN2 / ARADIN3** - Enclosures with DIN rail for RACK cabinets are intended for mounting equipment located inside. Each enclosure has rail, length: 24×1S. Height of module cannot exceed 160mm.

**RADIN** - Mounting plate of 4U high with DIN rail is designed for mounting devices on DIN rail in rear side of RACK 19" cabinets. Combination of rail with steel plate ensures rigid mounting of device on rail including possibility of attaching power cables / signal cables to mounting plate. RADIN offers economical alternative for enclosures ARADIN1, 2, 3 mounted in RACK 19" cabinets.



Sample product  
**ARADIN3**

Code	Number of "S" fields W <sub>1</sub>	Mounting dimensions W×H	Dimensions W×H×D [+/- 2mm] W <sub>1</sub> / W <sub>2</sub> / D <sub>1</sub> / D <sub>2</sub> [+/- 2mm]
<b>ARADIN1</b>	24	19"×3U	482×131×140 427 / 450 / 70 / 62
<b>ARADIN2</b>	24	19"×3U	482×131×235 427 / 450 / 70 / 162
<b>ARADIN3</b>	24	19"×4U	482×174×235 427 / 450 / 70 / 162
<b>RADIN</b>	24	19"×4U	483×176×21 440 / - / - / -



## Enclosure for alarm control panel – vertical

RAW07 metal enclosure is designed for mounting alarm control panel and input/output modules in RACK 19" cabinets. This enclosure is fitted with removable mounting plate (level I) and removable hinged mounting plate (level II). Enclosure has place for single 17Ah / 12V battery. Mounting plate (level I) has pre-embossed openings for transformer of TRP / and TRZ series and built-in power supply units of PS and PSB / and PSG2 series by Pulsar. Hinged mounting plate (level II) has openings for control panels and expansion modules from following companies: DSC, PARADOX, RISCO, SATEL, PYRONIX, CROW, and ROGER.



**RAW07**

Code	Static load	Mounting dimensions W×H	Dimensions W / W <sub>3</sub> / H / D [+/- 2mm]	Mounting plate (level I) W <sub>1</sub> ×H <sub>1</sub> ×D <sub>1</sub> [+/- 2mm]	Hinged mounting plate (level II) W <sub>2</sub> ×H <sub>2</sub> ×D <sub>2</sub> [+/- 2mm]
<b>RAW07</b>	20kg	19"×7U	483 / 431 / 310 / 152	350×268×85	400×262×55

### Accessories:



ARAW45 fan



ARAP16P, ARAP21P  
glands



Cable protection  
MM019, MM020

## Enclosures for alarm control panel – horizontal, sliding

RACK security enclosures are designed for mounting alarm control panel and input / output modules in free-standing RACK 19" cabinets with depths in range from 800 to 1000 mm.

They consist of two elements:

1. Patch panel is used to switch between YTDY 6×0,5 cable with copper cores and elastic cable supplying signals and power to control panel.
2. Pull out enclosure with 2U / 4U height – alarm control panel and input / output modules are mounted in this section – with space for 7Ah / 17Ah battery, transformer and ARAW45 fan (transformer and fan are not included).

Universal holes in enclosure allow mounting control panels and expansion modules of following companies: DSC, PARADOX, RISCO, SATEL, PYRONIX, CROW, ROGER.



Sample product  
**ARAD-S4**

Code	Signal wires (pairs× cross-section)	Number of PCB boards	Maximum current	Fitting battery	Mounting dimensions W×H	Mounting plate (level I)	Hinge mounting plate (level II)
<b>ARAD-S2</b>	24×0,5	3	1,5A / 30 V DC	7Ah / 12V	19"×2U	250×260 (358×330)	n/a
<b>ARAD-S4</b>	48×0,5	6	1,5A / 30 V DC	17Ah / 12V	19"×4U	155×278 (360×342)	370×284 (370×352)

**For mounting inside RACK cabinet, use ARAS rails.**

**Accordingly to cabinet's depth:**

- ARAS800 for RACK cabinets, depth D=800
- ARAS1000 for RACK cabinets, depth D=1000

### Accessories:



ARAS... rails



ARAW45 fan



ARAP16P, ARAP21P  
glands



Cable protection  
MM019, MM020

## ARAD...N enclosures

Enclosures are intended for mounting inside RACK 19" cabinets. Enclosures allow integrate elements of CCTV, AC, I&HAS, RTV, LAN systems in RACK 19" cabinets. They are intended for mounting alarm control panels, AC controllers, power supply units, batteries, etc.



Sample product  
**ARAD3N**

Code	Dedicated for RACK 19" cabinets with depth	Installation		Mounting dimensions W×H	Dimensions W <sub>2</sub> ×D <sub>2</sub> ×H [+/- 2mm]	Mounting plate (level I) W <sub>1</sub> ×D <sub>1</sub> ×H <sub>1</sub> [+/- 2mm]	Hinged mounting plate (level II) W <sub>3</sub> / D <sub>3</sub> / H <sub>2</sub> / H <sub>3</sub> / H <sub>4</sub> [+/- 2mm]	
		ARAS...N sliding rails	Front mounting (without ARAS...N ails)					
ARAD1SN	450	—	✓	19"×1U	415×270×44	brak, H <sub>1</sub> =40	n/a	
ARAD2SN		Accordingly to cabinet's depth: • depth 450 – ARAS450N • depth 600 – ARAS600N • depth 800 – ARAS800N • depth 1000 – ARAS1000N	✓	19"×2U	415×270×87	368×228×76	n/a	
ARAD3SN			✓	19"×3U	415×270×132	368×228×121	n/a	
ARAD4SN			✓	19"×4U	415×270×176	368×228×159	372 / 220 / 108 / 77 / 47	
ARAD2N	600 / 800 / 1000		✓	19"×2U	415×400×87	368×358×76	n/a	
ARAD3N			✓	19"×3U	415×400×132	368×358×121	n/a	
ARAD4N			✓	19"×4U	415×400×176	368×358×159	372 / 350 / 108 / 77 / 47	

### Accessories:



ARAS...N rails



ARAW45 fan



ARAP16P, ARAP21P  
glands



Cable protection  
MM019, MM020

## Drawers

2U / 3U / 4U high RACK drawer are intended for storing / mounting supplementary elements in RACK cabinets.



Sample product  
**RASR3**

Code	Mounting dimensions W×H×D <sub>2</sub>	Dimensions W×H×D [ +/- 2mm] W <sub>1</sub> ×H <sub>1</sub> ×D <sub>3</sub> [ +/- 2mm]
RASR2	19"×2U×360mm	483×88×386 400×70×340
RASR3	19"×3U×360mm	483×132×386 400×110×340
RASR4	19"×4U×360mm	483×176×386 400×155×340

## Accessories for RACK 19" cabinets

### Battery enclosures

**RAKU2** – Battery enclosure for RACK 19" cabinets designed for installation of 2×17Ah or 4×7Ah batteries. Enclosure is dedicated for RACK 19" cabinets of RWA / RW / RWD / RS and ZRS series behind buffer power supply units and buffer switches by Pulsar.

**RAKU3** – Battery enclosure for RACK 19" cabinets designed for installation of 4×17Ah or 4×7Ah batteries. It is fitted with four BAT1 – BAT4 connectors for capacity and voltage configuration of batteries inside enclosure.



Sample product  
**RAKU3**

Code	Fitting battery	Mounting dimensions W×H	Dimensions W×H×D [± 2mm] W <sub>1</sub> / D <sub>1</sub> / D <sub>2</sub> [± 2mm]
<b>RAKU2</b>	2×17Ah / 12V 4×7Ah / 12V	19"×2U	483×88×180 429 / 60 / 120
<b>RAKU3</b>	4×17Ah / 12V 4×7Ah / 12V	19"×2U	483×88×422 435 / 12 / 410

Accessories for RAKU2:



**RAKU2-ZP**

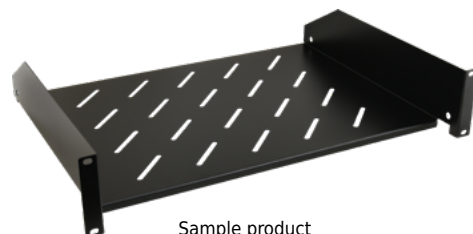
### Fixed shelves

**RAPD600** – Front mounted shelf with dimensions of 445×315 is universal fixed shelf dedicated for RACK 19" cabinets of RWA / RW / RWD / RS and ZRS series. It is front mounted in RACK profiles.

**RAPDS** – Shelf dedicated to switches:

- S64, S108, S108-90W
- SG64, SG108, SG108-90W
- SFG64, SFG64F1

**RAPS...** – Fixed shelves for RACK 19" cabinets of RWA / RW / RWD / RS and ZRS series. They are side mounted in RACK profiles.



Sample product  
**RAPD600**

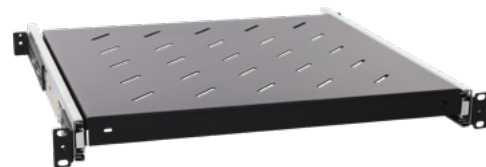
Code	For RACK cabinets, type / Depth								Shelf dimensions W×D [+/- 2mm]	External dimensions W <sub>1</sub> / H / D <sub>1</sub> [+/- 2mm]
	RWA		RW		RWD	RS and ZRS				
	450	600	450	600	600	600	800	1000		
RAPD600	✓	✓	✓	✓	✓	✓	✓	✓	445×315	483 / 87 / 350
RAPDS	✓	✓	✓	✓	✓	✓	✓	✓	445×242	485 / 45 / 242
RAPS450	✓	—	✓	—	✓	—	—	—	485×250	— / 48 / —
RAPS600	—	✓	—	✓	—	✓	—	—	485×350	— / 48 / —
RAPS800	—	—	—	—	—	—	✓	—	485×550	— / 48 / —
RAPS1000	—	—	—	—	—	—	—	✓	485×750	— / 48 / —

## Accessories for RACK 19" cabinets

### Sliding shelves

**RAPW-K** – Pull out shelf for keypads and mouse dedicated for free-standing RACK cabinets with computer to monitor / configure devices included in system.

**RAPW...** – Pull-out shelves for RACK 19" cabinets of RWA / RW / RWD / RS and ZRS series. They are mounted in front and rear RACK profiles and offer possibility of smooth adjustment of rear brackets. Rails have full extension slide possibility and load capacity of 15kg. Full extension slide guarantees access to devices mounted outside RACK cabinets.



Sample product  
**RAPW600**

Code	For RACK cabinets, type / Depth								Static load	Mounting dimensions W×H	Shelf dimensions W <sub>1</sub> ×D [+/- 2mm]	Adjustment D <sub>1</sub> - D <sub>2</sub> [+/- 2mm]
	RWA		RW		RWD	RS and ZRS						
	450	600	450	600	600	600	800	1000				
RAPW-K	—	—	—	—	—	✓	✓	✓	20 kg	19"×2U	(W <sub>1</sub> =408, D <sub>1</sub> =300) (W <sub>2</sub> =414, D <sub>2</sub> =303)	—
RAPW450	✓	—	✓	—	✓	—	—	—	15 kg	19"×1U	420×280	261 – 390
RAPW600	—	✓	—	✓	—	✓	—	—	15 kg	19"×1U	420×400	412 – 610
RAPW800	—	—	—	—	—	—	✓	—	15 kg	19"×1U	420×550	463 – 661
RAPW1000	—	—	—	—	—	—	—	✓	15 kg	19"×1U	420×730	623 – 822

### Mounting rails

**RASM...** – mounting rails 600 / 800 / 1000 are intended for supporting to front mount heavy devices (switch, PSU, UPS) in RACK 19" cabinets.



Sample product  
**RASM600**

Code	For RACK cabinets, type / Depth								Dimensions WxD [+/- 2mm]	Static load [kg]
	RWA		RW		RWD	RS and ZRS				
	450	600	450	600	600	600	800	1000		
RASM600	—	✓	—	✓	—	✓	—	—	45×350	60
RASM800	—	—	—	—	—	—	✓	—	45×550	60
RASM800-120	—	—	—	—	—	—	✓	—	44×550	120
RASM1000	—	—	—	—	—	—	—	✓	45×750	60
RASM1000-120	—	—	—	—	—	—	—	✓	44×750	120

### Sliding mounting rails

**ARAS...N** rails for ARAD...N enclosures



Sample product  
**ARAS600N**

Code	For RACK cabinets with depth				Mounting dimensions W×H	Adjustment D <sub>1</sub> - D <sub>2</sub> [+/- 2mm]
	450	600	1000	1000		
<b>ARAS450N</b>	✓	—	—	—	19"×1U	261 – 377
<b>ARAS600N</b>	—	✓	—	—	19"×1U	330 – 449
<b>ARAS800N</b>	—	—	✓	—	19"×1U	504 – 630
<b>ARAS1000N</b>	—	—	—	✓	19"×1U	666 – 792

## Accessories for RACK 19" cabinets

### Patch panels - Cat. 5e and 6 - UTP / FTP

Patch panels are final element of structured network cabling in RACK 19" cabinets. Fundamental element of telecommunication network.



UTP twisted pair  
(unshielded)



FTP twisted pair  
(shielded)



Sample product  
**RP-F24V5**

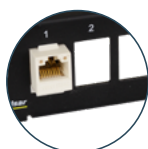
Code	Number of ports	Category	Twisted pair type	Mounting dimensions W×H×D	Installation of connectors LSA	Description field	Numbering of RJ45 connectors	Mounting shelf for cables
<b>RP-U24H5</b>	24	Cat 5e	UTP	19"×1U×120mm	vertical	✓	/	✓
<b>RP-U24V5</b>	24	Cat 5e	UTP	19"×1U×110mm	horizontal	✓	/	✓
<b>RP-U48V5</b>	48	Cat 5e	UTP	19"×1U×89mm	horizontal	—	/	✓
<b>RP-F24V5</b>	24	Cat 5e	FTP	19"×1U×110mm	horizontal	✓	/	✓
<b>RP-U24V6</b>	24	Cat 6	UTP	19"×1U×110mm	horizontal	✓	/	✓
<b>RP-F24V6</b>	24	Cat 6	FTP	19"×1U×110mm	horizontal	✓	/	✓

### Patch panel frames

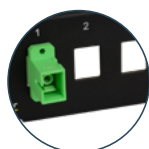
Patch panel frames are designed for installation (depending on model) up to 24 "F" type / Keystone RJ45 / single SC-APC / connectors in RACK 19" cabinets.



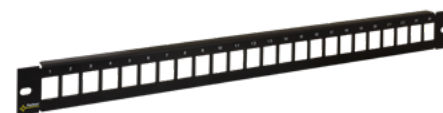
**RAP-F**



**RAP-RJ45**



**RAP-SCAPC1**



Sample product  
**RAP-RJ45**

Code	Connector type	Accessories	Module space	Mounting dimensions W×H	Dimensions W×H×D [+/- 2mm]
<b>RAP-F</b>	F	—	24	19"×1U	483×43×13
<b>RAP-RJ45</b>	keystone RJ45	GF-GF-K			
<b>RAP-SCAPC1</b>	SC / APC	SC/APC-1SM			

### Accessories:



**GF-GF-K**



**SC/APC-1SM**



## Accessories for RACK 19" cabinets

### Fans

**RAW1 / RAW2** – Fan designed for mounting from inside in upper part of wall mounted RACK cabinets of RWA / RW / RWD series. Forces air circulation from inside cabinet to outside. They are fitted with 230 V AC non-detachable power cord with 2m length.

**RAWP** – Panel of two fans designed for mounting in upper plate of free-standing RACK cabinets of RZ / ZRS series. Forces air circulation from inside cabinet to outside. Possibility of cascade connection of panels. It is fitted with 230 V AC detachable power cable with 2m length.

**RAWP-1** – Panel of four fans in RACK 19" enclosure with 1U height. Forces air circulation between active devices generating heat inside RACK cabinets. It is fitted with a 230 V AC detachable power cord with 2m length. Thermostats RAT and RAT-1R are dedicated for RAWP-1 fans panel.



Sample product  
**RAWP-1**

Code	Number of fans	Dedicated for RACK 19" cabinets:					Mounting dimensions W <sub>1</sub> ×H <sub>1</sub>	Dimensions W×H×D [+/- 2mm]
		RWA	RW	RWD	RS	ZRS		
RAW1	1	✓	✓	✓	—	—	105×105	120×120×38
RAW2	2	✓	✓	✓	—	—	105×105	120×120×38
RAWP	2	—	—	—	✓	✓	285×65	298×150×47
RAWP-1	4	✓	✓	✓	✓	✓	(W×H) 19"×1U	483×43×304

### Fans with thermostat

**RAWP-1R** – Panel of four fans with integrated digital thermostat in RACK 19" enclosure with 1U height. Forces air circulation between active devices generating heat inside RACK cabinets. It is fitted with detachable temperature sensor with 2m length and with 230 V AC detachable power cord with 2m length.



**RAWP-1R**

Code	Mounting dimensions W×H	Dimensions W×H×D [+/- 2mm] W <sub>1</sub> / D <sub>1</sub> / D <sub>2</sub> [+/- 2mm]
RAWP-1R	19"×1U	482×44×314

### Thermostats

**RAT** – Bimetallic thermostat dedicated for controlling fan units of RAW1 / RAW2 and RAWP type. Equipped with metal mounting bracket for mounting 1U on RACK profile.

**RAT-1R** – Digital thermostat panel in RACK 19" enclosure with 1U height. It is fitted with two power sockets - used for controlling fan units of RAW1 / RAW2 and RAWP type. Panel is fitted with detachable temperature sensor with 2m length and with 230 V AC detachable power cord with 2m length.



Sample product  
**RAT-1R**

Code	Mounting dimensions W×H	Dimensions W×H×D [+/- 2mm] W <sub>1</sub> / H <sub>1</sub> / D <sub>1</sub> / D <sub>2</sub> [+/- 2mm]
RAT	—	32×58×41
RAT-1R	19"×1U	482×44×102,7

## Accessories for RACK 19" cabinets

### Lighting

RAOS lighting should be mounted at rear or at front side of RACK 19" cabinets. It is designed for lighting inside of cabinet during installation or servicing. Lighting is designed for RWA, RW and RWD hanging cabinets or for RS and ZRS free standing cabinets.



**RAOS**

Code	Power supply	Mounting dimensions W×H	Dimensions W×H×D [+/- 2mm] D <sub>1</sub> [+/- 2mm]
<b>RAOS</b>	230 V AC / 5W	19"×1U	483×43×60 46

### Blanking panels

Blanking panels for RACK 19" cabinets are intended for blanking empty spaces between parts of equipment mounted inside cabinets.



Sample product  
**RAPZ4**

Code	Mounting dimensions W×H	Dimensions W×H×D [+/- 2mm]
<b>RAPZ1</b>	19"×1U	482×45×12
<b>RAPZ2</b>	19"×2U	482×88×12
<b>RAPZ3</b>	19"×3U	482×133×12
<b>RAPZ4</b>	19"×4U	482×177×12

### Power distribution units

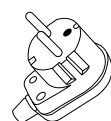
Power distribution units are mounted between RACK rails. They enable plugging up to 8 devices supplied with 230 V AC.



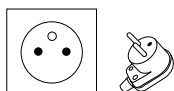
Sample product  
**RALZ/F**

Code	Plug type	Socket type	Number of sockets	Power	Mounting dimensions W×H	Dimensions W×H×D [+/- 2mm]
<b>RALZ</b>	E/F "Unischuko"	E	8	3500W	19"×1U	484×45×45
<b>RALZ/F</b>	E/F "Unischuko"	F "Schuko"	8	3500W	19"×1U	484×45×45

**RALZ**

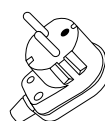


**plug:**  
type: E/F  
("Unischuko")

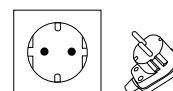


**socket:**  
type: E

**RALZ/F**



**plug:**  
type: E/F  
("Unischuko")



**socket:**  
type: F  
("Schuko")

## Accessories for RACK 19" cabinets

### Cable management panels

**RAOK-1M / RAOK-1P / RAOK-1T** – Cable management panels are designed to organize and protect horizontal cabling in RACK cabinet against accidental damage.

**RAOK-LR** – Cable management panel is designed to organize and protect vertical cabling in RACK cabinets of RS / ZRS type against accidental damage (RACK cabinet width – 600mm).

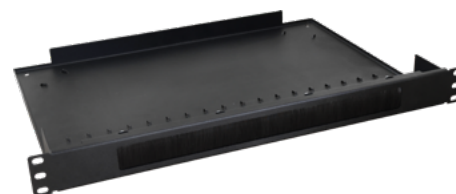


Sample product  
**RAOK-1P**

Code	Mounting dimensions W×H	Dimensions W×H×D [+/- 2mm]
<b>RAOK-1M</b>	19"×1U	483×44×70
<b>RAOK-1P</b>	19"×1U	482×44×68
<b>RAOK-1T</b>	19"×1U	483×35×11
<b>RAOK-LR</b>	—	116×52×45

### Brush grommets

Brush grommets for RACK cabinets enable entering cables aesthetically and protect cabinet against intrusion of any objects.



Sample product  
**RAPS-1P**

Code	Dedicated for RACK 19" cabinets:					Mounting dimensions W×H	Dimensions W×H×D [+/- 2mm] W <sub>1</sub> ×H <sub>1</sub> [+/- 2mm]
	RWA	RW	RWD	RS	ZRS		
<b>RAPS-U</b>	✓	✓	✓	—	—	—	380×80×16 230×40
<b>RAPS</b>	—	—	—	✓	✓	—	273×64×16 220×40
<b>RAPS-1</b>	✓	✓	✓	✓	✓	19"×1U	483×44×16 320×25
<b>RAPS-1P</b>	✓	✓	✓	✓	✓	19"×1U	483×44×322 320×25

### Tamper switch – protection for RACK 19" cabinets

Tamper switches are designed to protect RACK 19" cabinets against unauthorized opening. Alarm is activated by opening front, rear or side doors of cabinet.



**RWST**

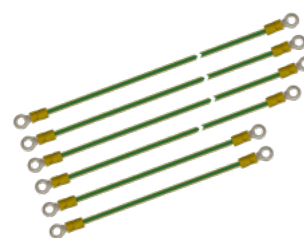
Code	For RACK cabinets	External dimensions W×H×D [mm]
<b>RWST</b>	<b>RW / RWA / RWD / RS / ZRS</b>	153×66×17

## Accessories for RACK 19" cabinets

### Grounding wires

Sets of grounding wires are designed to ground all components of RACK 19" cabinets.

Code	For RACK cabinets	Length
<b>RAPU</b>	<b>RWA / RW / RWD</b>	3×120cm, 1×60cm, 2×30cm
<b>RAPU-Z</b>	<b>RS / ZRS</b>	1×280cm, 1×80cm, 6×40cm



Sample product  
**RAPU**

### Plinths

Plinths with height of 100 mm are designed for RS and ZRS free-standing cabinets. Allows stabilizing cabinet and floor mounting.

Code	For RACK cabinets, type: RS / ZRS width×depth [mm]	Dimensions W×H×D [+/- 2mm]
<b>RAC166M</b>	600×600	596×100×596
<b>RAC168M</b>	600×800	596×100×796
<b>RAC1610M</b>	600×1000	596×100×996
<b>RAC188M</b>	800×800	796×100×796
<b>RAC1810M</b>	800×1000	796×100×996



Sample product  
**RAC166M**

### Casters, leveling feet

**RAK** – Casters for free standing RACK cabinets. Set of 4 casters enables easy moving and position adjustments of cabinet.

**RAKB** – Casters for free standing RACK cabinets. Set of 4 casters enables easy moving of cabinet and locking it in selected position.

**RAN** – Leveling feet are for leveling and stabilising RACK cabinet with all mount devices.

Code	Dimensions W×H×D [+/- 2mm]
<b>RAK</b>	55×70×85
<b>RAKB</b>	55×70×85
<b>RAN</b>	M12 / Ø=32, H=90



Sample product  
**RAKB**

### Locks, screws

**RAZ25** – Universal round lock 25 is intended for front / rear door of RACK cabinets, type: RWA, RW, RWD, RS, ZRS.

**RAZB16** – Round side panel lock 16 is intended for mounting in side panels of RACK cabinets, type: RW, RWD, RS, ZRS.

**RAZ-D** – Lock intended to rear door of RACK cabinets RWD series.

**RAZ-S** – Universal front door lock for RACK cabinets of RS / ZRS types.

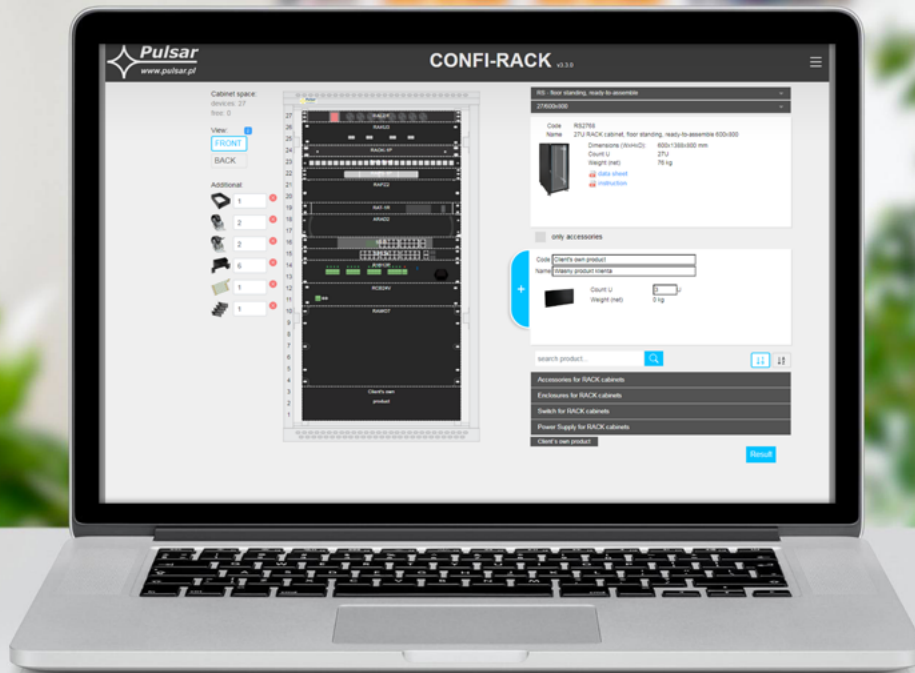
**RAS4** – Set of 4 pcs M6 screws is used to mount device into RACK cabinets.

Code	Dimensions [mm]
<b>RAZ25</b>	D=29
<b>RAZB16</b>	D=13
<b>RAZ-D</b>	D=25,5
<b>RAZ-S</b>	34×140×30
<b>RAS4</b>	M6×10



Sample product  
**RAZ-S**





### CONFIRACK®

We want to introduce CONFIRACK® program which is intended for price and equipment configuration of our RACK 19" cabinets and accessories. Program is available online and allows permanent access to it.

Its simple and intuitive operation enable:

- quick selection of particular RACK 19" cabinet;
- unambiguous assignment of accessories;
- print list with arrangement of accessories inside cabinet;
- configuration of other companies equipment position, e.g. UPS.